

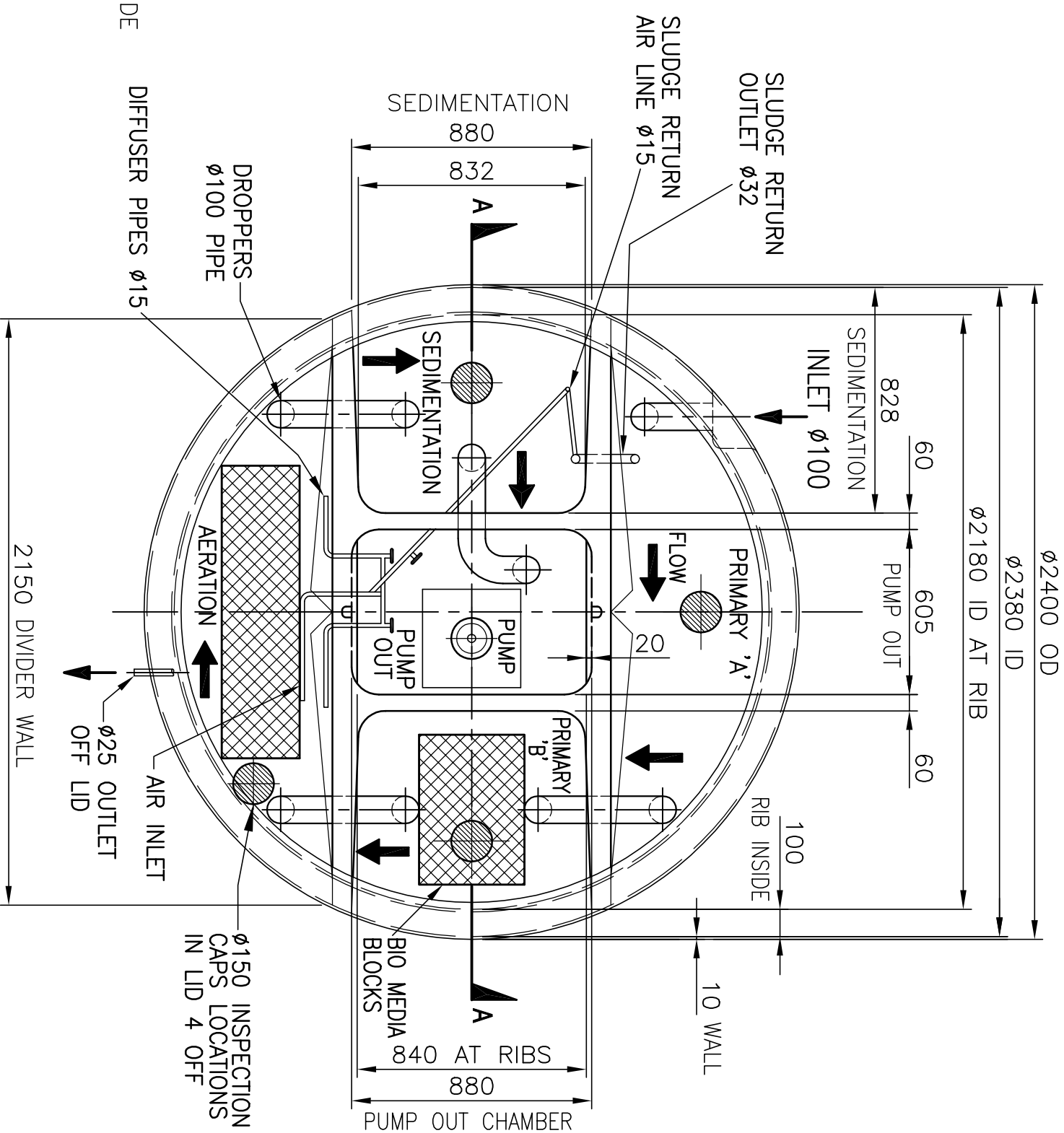
SECTION A-A

TOTAL CAPACITY OF TANK : 8640 LITRES

CAPACITY OF CHAMBERS AT WORKING LEVELS :-

1. PRIMARY 'A' : 1440 LITRES
2. PRIMARY 'B' : 961 LITRES
3. AERATION : 1371 LITRES
4. SEDIMENTATION : 940 LITRES
5. PUMP OUT : 720 LITRES

TOTAL CAPACITY OF CHAMBERS AT WORKING LEVEL : 5432 LITRES



**PLAN ON TANK
LID REMOVED**

COPYRIGHT:-
THIS DESIGN IS THE COPYRIGHT OF
KRYSTEL KLEER TREATMENT SYSTEMS
AND MAY NOT BE USED OR COPIED
WITHOUT THE CONSENT OF KRYSTEL
KLEER TREATMENT SYSTEMS

ISSUED : 6 MARCH 2012

Quality Tanks (Qid) Pty.Ltd.
PO Box 5168 Gold Coast MC, QLD 9726
Phone (07) 3382 7666 Fax (07) 3382 6411
Web: www.qualitytanks.com.au

KRYSTEL KLEER ADV 5000
POLY TREATMENT PLANT

Drawn	G.MOSSMAN
Approved	KEN GRAY
Date	6 MARCH 2012
Scale	1:20 A3
Drawing No.	QT 1201
Rev	O